

4131 Delp St.

INDUSTRIAL
Space Available



4131 Delp St.
Memphis, TN 38118
Submarket: Southeast



Project

Commercial Alliance Management is pleased to present this 44,809 square foot availability at 4131 Delp. The property is equipped with twelve dock doors and a clear height of 20'. Additionally the property is outfitted with T-5 lighting throughout the warehouse.

Space

- 44,809 square feet
- 1,460 square foot office
- 20' Clear
- 12 Dock Doors (11-8'x10' & one 10'x10')
- Fenced outside storage (Approximately 3/4 -acre)
- T-5 lights
- Sprinkler density - .251 gpm/2,000 SF
- Column spacing - 28' (w) x 40' (d)- typical
- Warehouse walls painted white

Location

Located on Delp Street, off Raines Road and Lamar Avenue.

Contact us

For More Information:

Mark Jenkins, CCIM
901-362-9870
mjenkins@comallmgt.com

Phil Dagastino, Jr.
901-362-2982
pdagastino@comallmgt.com

Conner Walker
901.362.9862
cwalker@comallmgt.com
www.comallmgt.com

Commercial Alliance
REAL ESTATE LEASING & MANAGEMENT

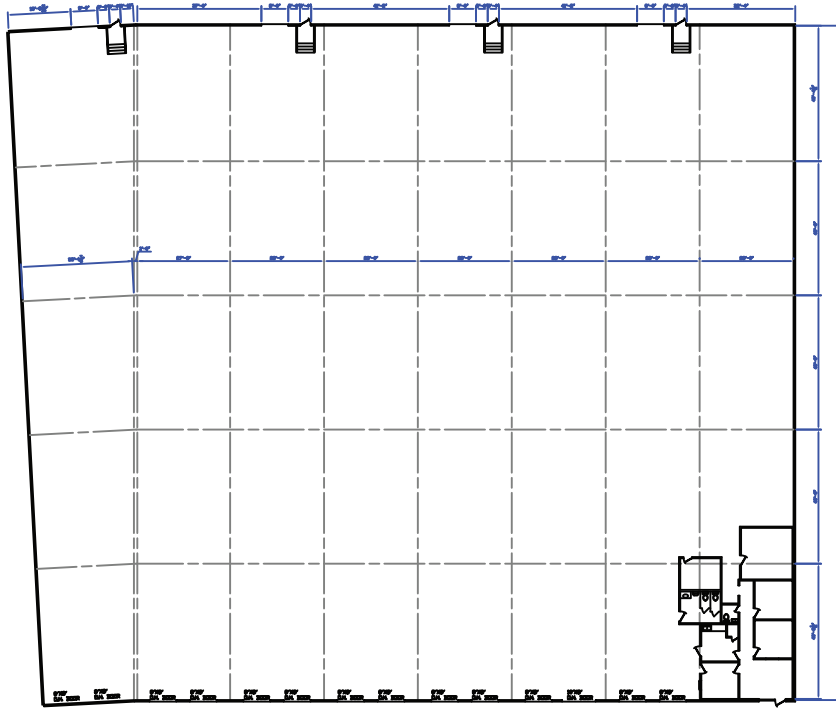
An independently owned and operated member of the
CUSHMAN & WAKEFIELD
ALLIANCE

Commercial Alliance Management, LLC 3175 Lenox Park Blvd., Suite 104, Memphis, TN 38115 901-683-0808

No warranty or representation, express or implied, is made as to the accuracy of the information contained herein, and same is submitted subject to errors, omissions, change of price, rental or other conditions, withdrawal without notice, and to any specific listing conditions imposed by our principals.

4131 Delp St.

INDUSTRIAL Space Available

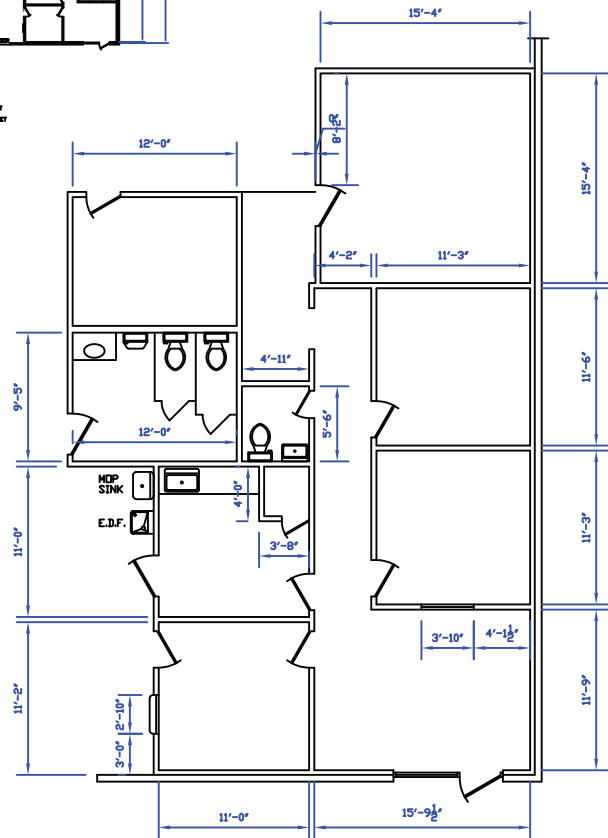


44,809 SF
Available Space

FLOOR PLAN
1/16" = 1'-0"

OFFICE: 1,459 SQUARE FEET
WARRANTY: 40, 350 SQUARE FEET

1,459 SF Office Space



FLOOR PLAN
1/4" = 1'-0"

