

Lakecrest III



OFFICE
SPACE AVAILABLE



"The best of East Memphis without the headache and price."

6060 Primacy Parkway
Memphis, TN 38119
County: Shelby



PROJECT

Available Space: 1,297-22,466 square feet
Starting Lease Rate: \$17.75
Expense Stop: Base Year
Year Built: 1980/Renovated 1996
Parking: 4.0/1,000 rsf

SPACE AMENITIES

- Easy access to Poplar Avenue and I-240
- Manicured landscaping
- Close to retail, banking, and restaurants
- Controlled parking

FOR MORE INFORMATION

Contact

Phil Dagastino, Jr.

901.362.2982

pdagastino@comallmgt.com

Conner Walker

901.362.9862

cwalker@comallmgt.com

Commercial Alliance Management, LLC

3175 Lenox Park Blvd., Suite 104

Memphis, TN 38115

901.683.0808

No warranty or representation, express or implied, is made as to the accuracy of the information contained herein, and same is submitted subject to errors, omissions, change of price, rental or other conditions, withdrawal without notice, and to any specific listing conditions imposed by our principals.



www.comallmgt.com

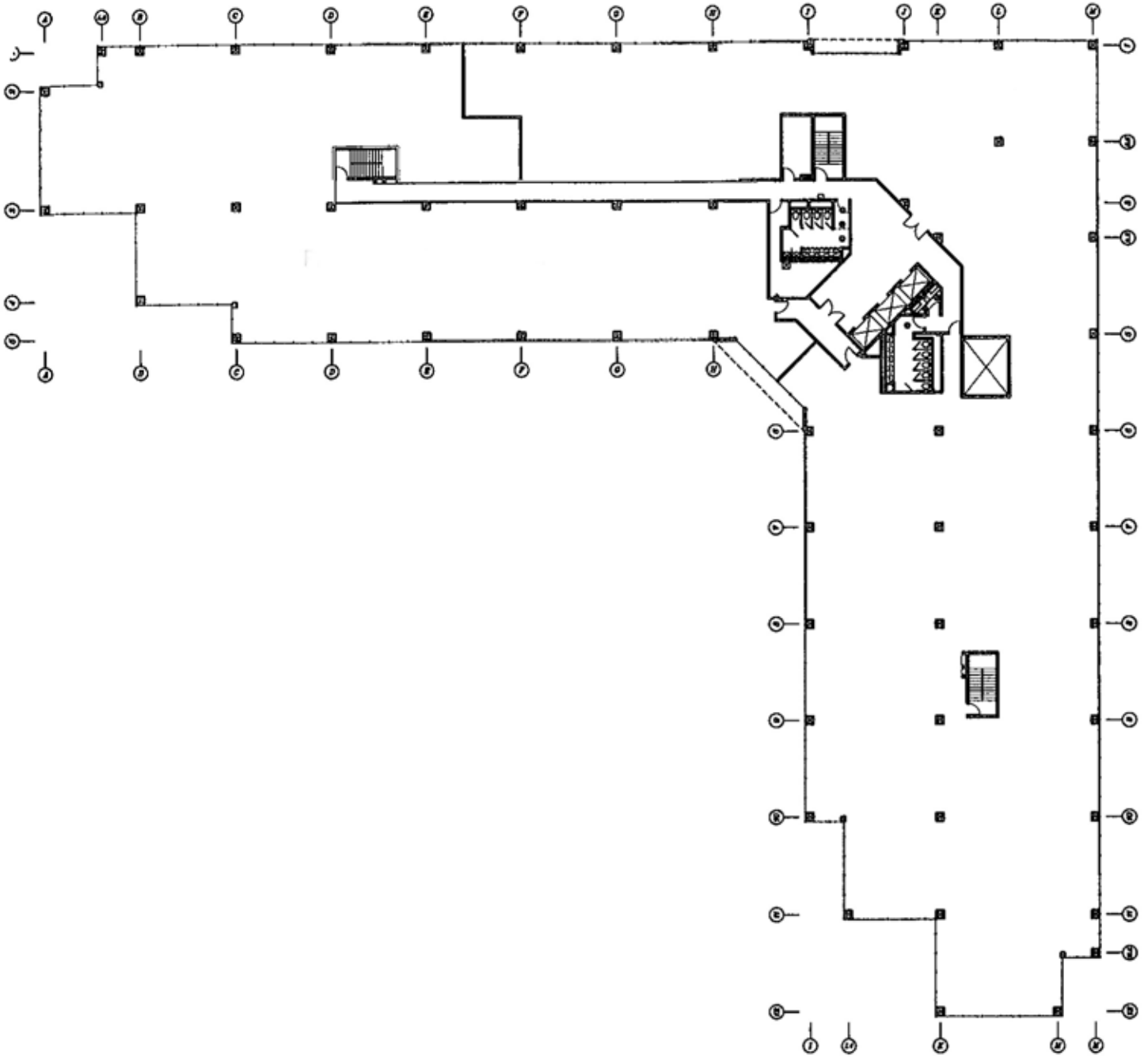
Commercial Alliance
REAL ESTATE LEASING & MANAGEMENT

An independently owned and operated member of the
CUSHMAN & WAKEFIELD
ALLIANCE

Lakecrest III



OFFICE
SPACE AVAILABLE



29MAR2006	1"=40'		<h2>Lakecrest III</h2> <p>6060 Primacy Parkway Memphis Tennessee</p>	<h1>FLOOR 3</h1>
33,371 RSF	14%			



www.comallmgt.com

Commercial Alliance
REAL ESTATE LEASING & MANAGEMENT

An independently owned and operated member of the
CUSHMAN & WAKEFIELD
ALLIANCE