

# MIMEO BUILDING

3350 MIAC Cove, Memphis, TN 38118 | Southeast Submarket

**OFFICE**  
Space Available



Available Space: 33,700 SF

Starting Lease Rate: \$17.75

Expense Stop: Base Year

Year Built:  
1980/Renovated 1996 &  
lobby renovation in 08/09

Parking: 4.14/1,000 RSF

## SPACE AMENITIES

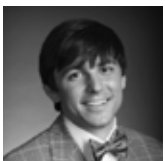
- Easy access to Poplar Avenue and I-240
- Manicured landscaping
- Close to retail, banking, restaurants and hotels
- On-site property management
- On-site building engineer
- Just miles from Shelby Farms and Lichterman Nature Center
- Gated and secured parking
- Card access control system
- On-site guard 5:00 pm - 11:00 pm
- Cameras monitoring building and entrances



## FOR MORE INFORMATION:



**Phil Dagastino**  
901.362.2982  
pdagastino@commadv.com



**Conner Walker**  
901.362.9862  
cwalker@commadv.com



**CUSHMAN &  
WAKEFIELD®**



**COMMERCIAL  
ADVISORS**  
INDEPENDENTLY OWNED AND OPERATED

Commercial Advisors Asset Services, LLC 5101 Wheelis Drive, Suite 320, Memphis, TN 38117 | 901-683-0808

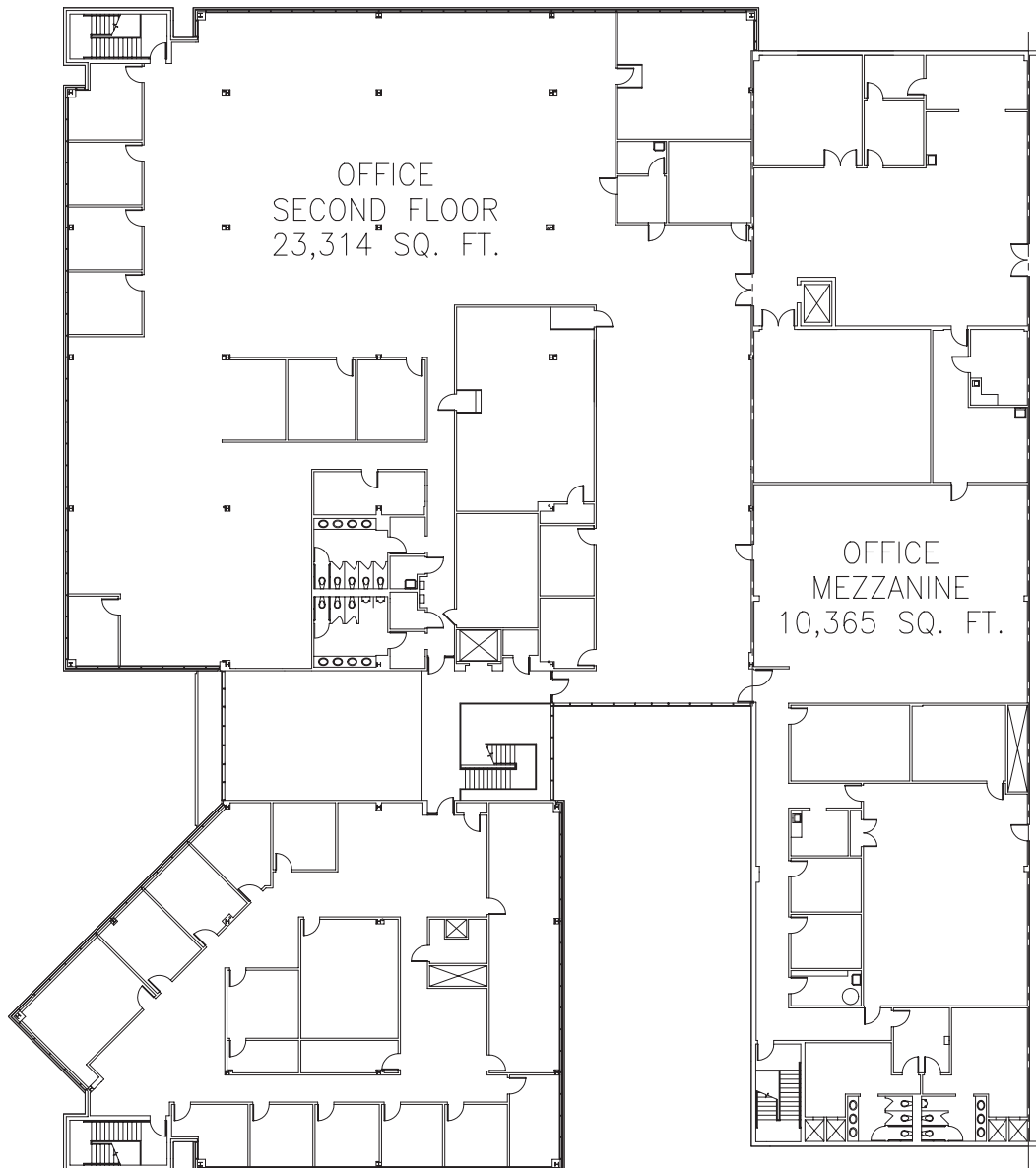
No warranty or representation, express or implied, is made as to the accuracy of the information contained herein, and same is submitted subject to errors, omissions, change of price, rental or other conditions, withdrawal without notice, and to any specific listing conditions imposed by our principals.

[www.commadv.com](http://www.commadv.com)

# MIMEO BUILDING

3350 MIAC Cove, Memphis, TN 38118 | Southeast Submarket

**OFFICE**  
Space Available



SECOND FLOOR PLAN



**CUSHMAN &  
WAKEFIELD**®



**COMMERCIAL  
ADVISORS**  
INDEPENDENTLY OWNED AND OPERATED

Commercial Advisors Asset Services, LLC 5101 Wheelis Drive, Suite 320, Memphis, TN 38117 | 901-683-0808

No warranty or representation, express or implied, is made as to the accuracy of the information contained herein, and same is submitted subject to errors, omissions, change of price, rental or other conditions, withdrawal without notice, and to any specific listing conditions imposed by our principals.

[www.commadv.com](http://www.commadv.com)