



"Class A Distribution Facility"

5215 Lamar Ave
Memphis, TN 38118
County: Shelby



PROJECT

Class A Warehouse Distribution Facility

Available Space: 789,291 sf - Divisible

Year Built: 2005

Available: March 2009

AMENITIES

- 9,010 sf Main Office
- 1,388 sf Shipping Office
- 1,410 sf Receiving Office
- 32' Clear Height
- Cross Docked
- 167 Dock Doors
- 2 Drive Ins
- ESFR Sprinkler System
- 53' x 44' Storage Bays
- 53' x 52' Loading Bays
- 111 Trailer Spaces
- 214 Car Parks

LOCATION

Situated on Lamar Ave (Hwy 78) approximately 1/2 mile south of Shelby Drive and BNSF Railway's \$200 million expansion of their current intermodal facility. Location is approximately six miles south of I-240 and five miles southeast of Memphis International Airport and the FedEx Hub.

FOR MORE INFORMATION

Contact

Mark Jenkins, CCIM

901.362.9870 (Direct)

mjenkins@comallmgt.com

Phil Dagastino, Jr

901.362.2982 (Direct)

pdagastino@comallmgt.com

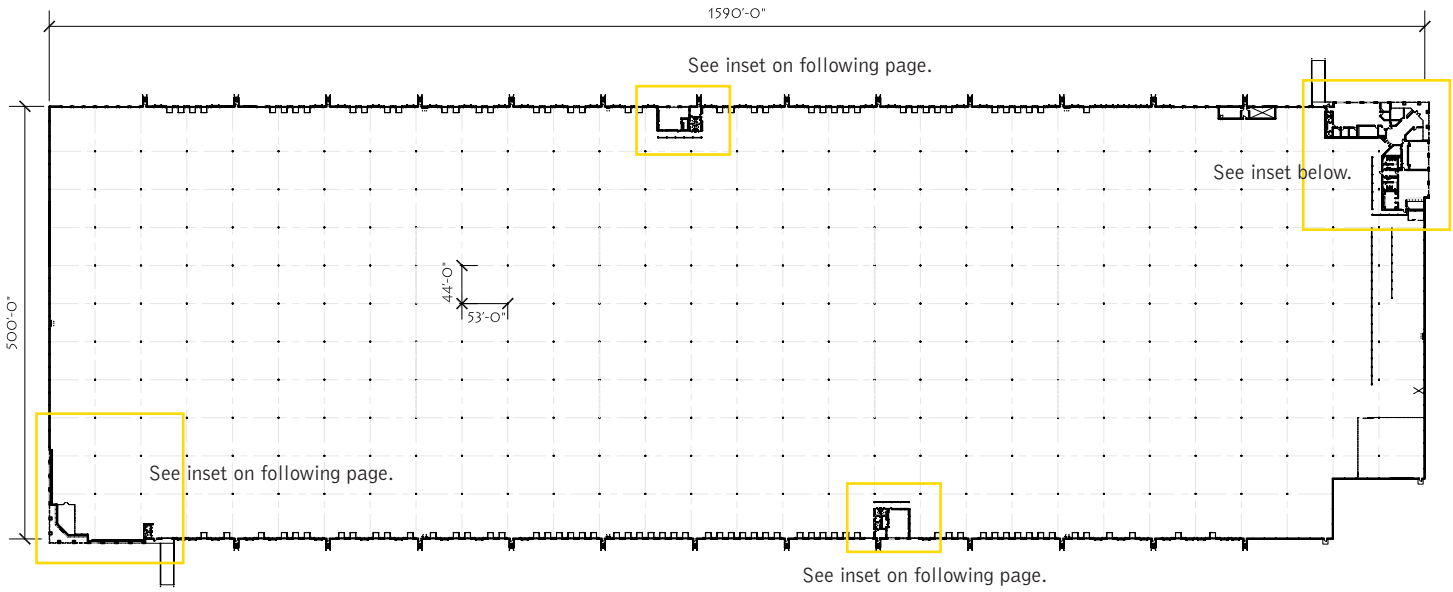
Commercial Alliance Management, LLC

3175 Lenox Park Blvd., Suite 104

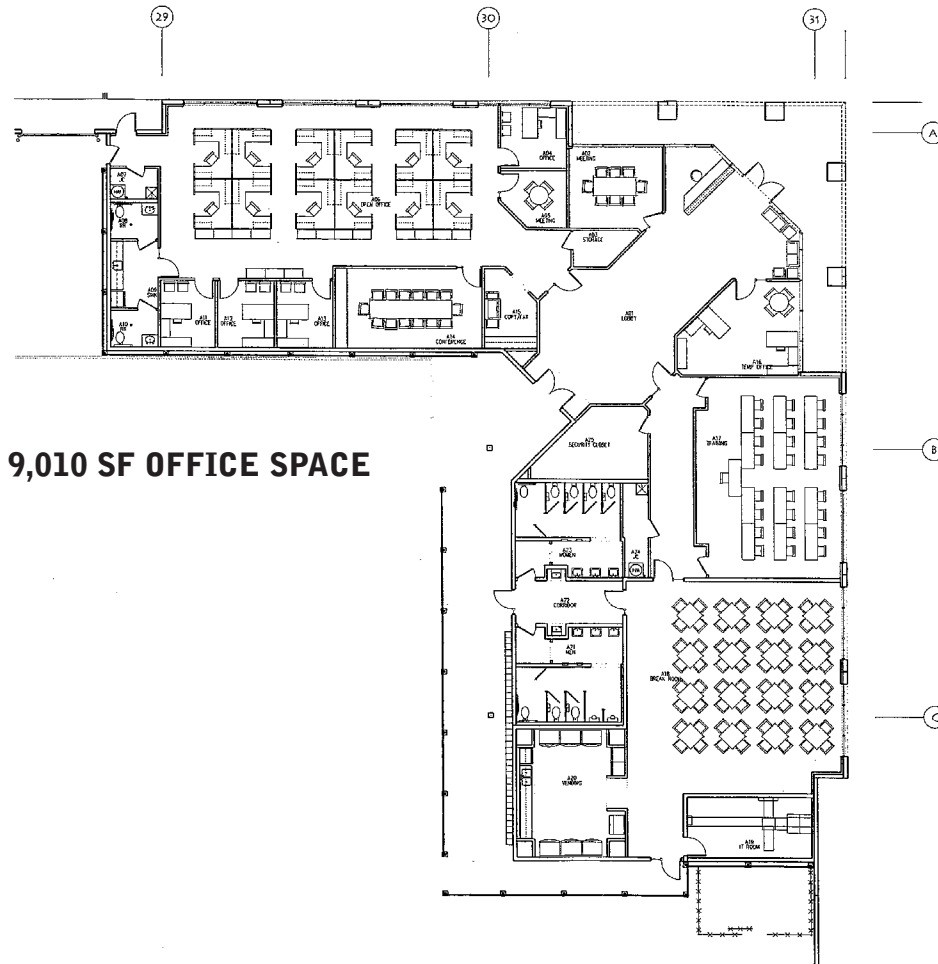
Memphis, TN 38115

901.683.0808 (Office)

No warranty or representation, express or implied, is made as to the accuracy of the information contained herein, and same is submitted subject to errors, omissions, change of price, rental or other conditions, withdrawal without notice, and to any specific listing conditions imposed by our principals.



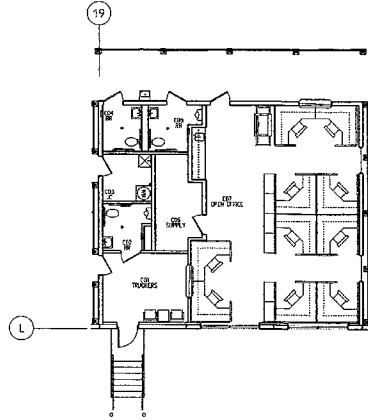
789,291 SF AVAILABLE



9,010 SF OFFICE SPACE

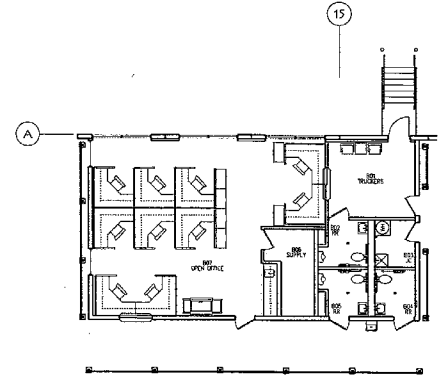
MAIN OFFICE AREA
2.10.1 FINISH PLAN





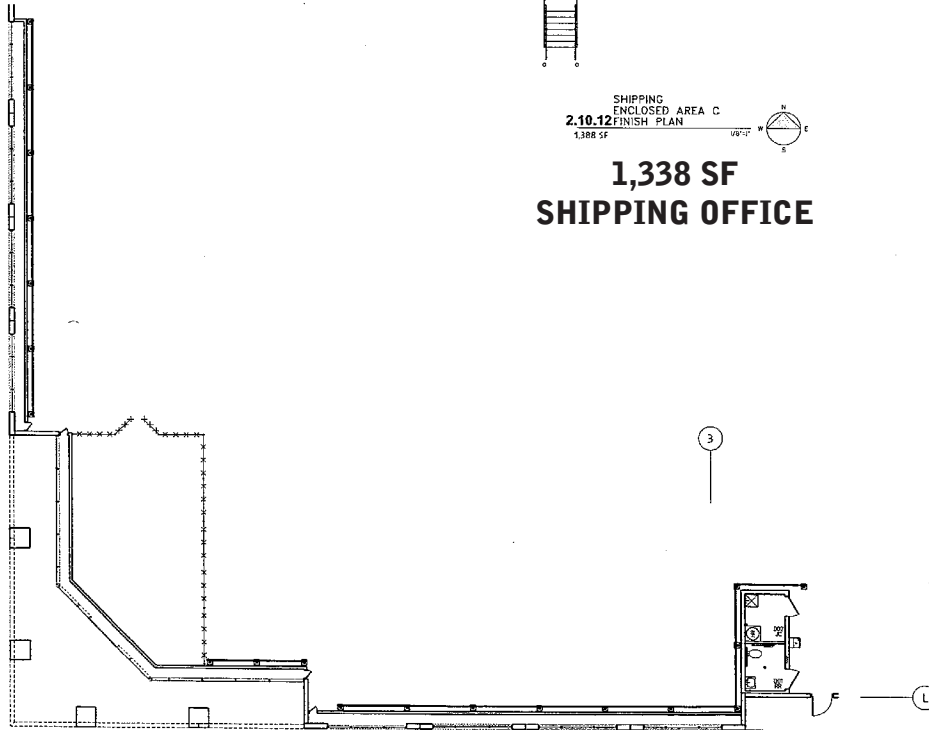
SHIPPING
ENCLOSED AREA C
2.10.12 FINISH PLAN
1,338 SF

**1,338 SF
SHIPPING OFFICE**

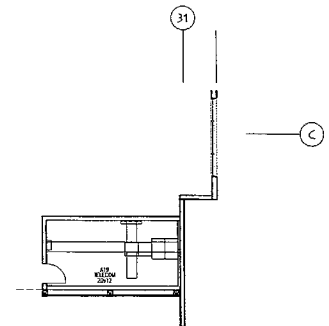


RECEIVING
ENCLOSED AREA B
2.10.4 FINISH PLAN
1,410 SF

**1,410 SF
RECEIVING OFFICE**



ENCLOSED AREA D
2.10.9 FINISH PLAN
111 SF



ENCLOSED AREA A
2.10.1 FINISH PLAN
240 SF