

Summit II

WAREHOUSE
Space Available



5215 Lamar Ave
Memphis, TN 38118
County: Shelby



Project

Class A Warehouse Distribution Facility

Available Space: 789,291 SF - Divisible

Year Built: 2005

Available: March 2009

Space Amenities

- 9,010 SF Main Office
- 1,388 SF Shipping Office
- 1,410 SF Receiving Office
- 32' Clear Height
- Cross Docked
- 167 Dock Doors
- 2 Drive Ins
- ESFR Sprinkler System
- 53' x 44' Storage Bays
- 53' x 52' Loading Bays
- 149 Trailer Spaces
- 214 Car Parks

Location

Situated on Lamar Ave (Hwy 78) approximately 1/2 mile south of Shelby Drive and BNSF Railway's \$200 million expansion of their current intermodal facility. Location is approximately six miles south of I-240 and five miles southeast of Memphis International Airport and the FedEx Hub.

Contact us
For More Information:

Mark Jenkins

901.362.9870

mjenkins@comallmgt.com

Phil Dagastino, Jr.

901.362.2982

pdagastino@comallmgt.com

www.comallmgt.com

Commercial Alliance
REAL ESTATE LEASING & MANAGEMENT

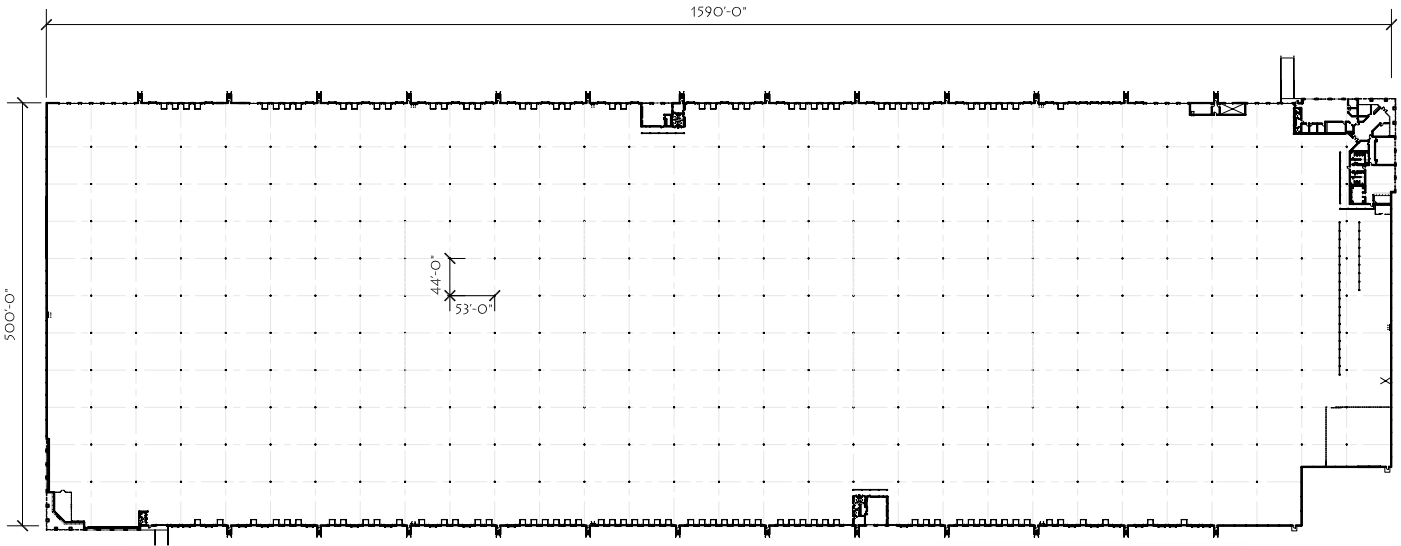


An independently owned and operated member of the
CUSHMAN & WAKEFIELD
ALLIANCE

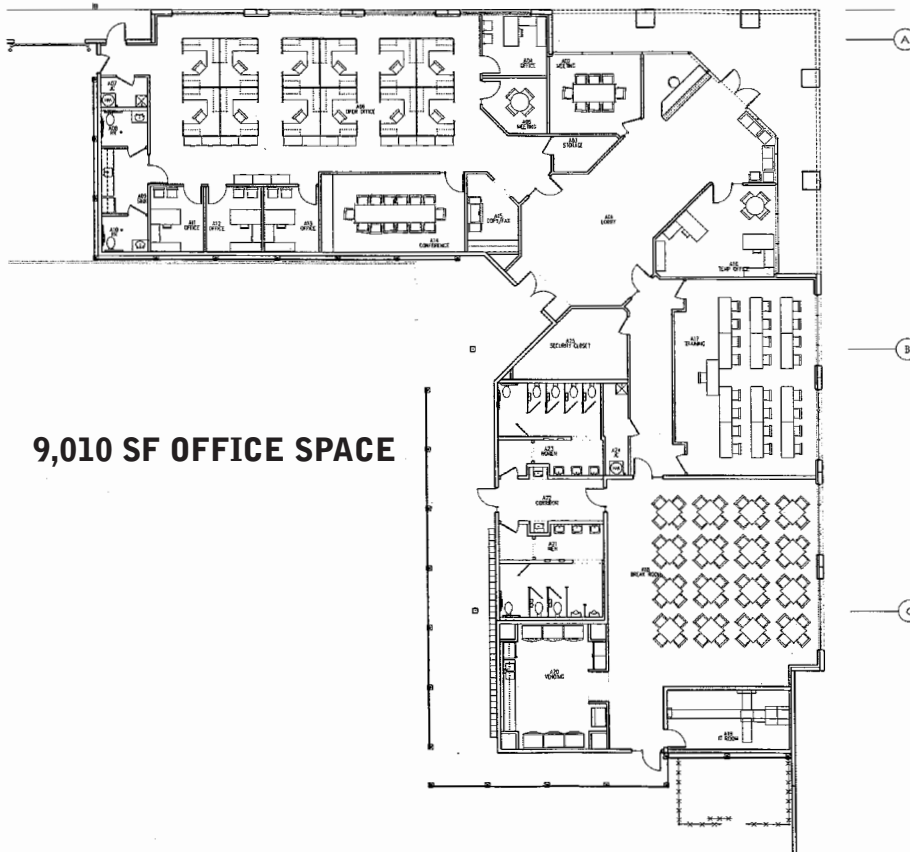
Commercial Alliance Management, LLC 3175 Lenox Park Blvd., Suite 104, Memphis, TN 38115 901-683-0808
No warranty or representation, express or implied, is made as to the accuracy of the information contained herein, and same is submitted subject to errors, omissions, change of price, rental or other conditions, withdrawal without notice, and to any specific listing conditions imposed by our principals.

Summit II

WAREHOUSE
Space Available



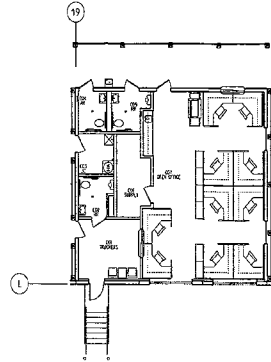
789,291 SF AVAILABLE



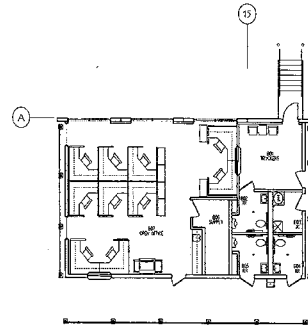
MAIN OFFICE AREA
2.10.1 FINISH PLAN
1/9/17

Summit II

WAREHOUSE
Space Available



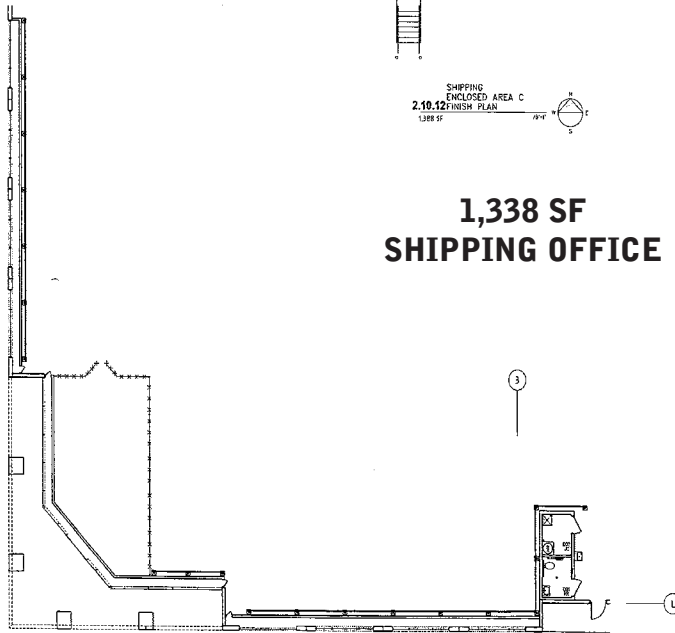
SHIPPING
ENCLOSED AREA C
2,10.12 FINISH PLAN
1,338 SF



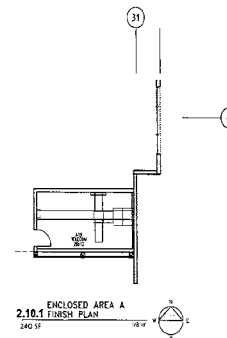
RECEIVING
ENCLOSED AREA B
2,10.4 FINISH PLAN
1,410 SF

**1,338 SF
SHIPPING OFFICE**

**1,410 SF
RECEIVING OFFICE**



ENCLOSED AREA D
2,10.9 FINISH PLAN
1,111 SF



ENCLOSED AREA A
2,10.1 FINISH PLAN
2,402 SF

REVISIONS
1. 10.15.10
2. 10.15.10
3. 10.15.10
4. 10.15.10
5. 10.15.10
6. 10.15.10
7. 10.15.10
8. 10.15.10
9. 10.15.10
10. 10.15.10
11. 10.15.10
12. 10.15.10
13. 10.15.10
14. 10.15.10
15. 10.15.10



PHASE ONE
HEWLETT PACKARD
5215 LAMAR AVENUE
MEMPHIS, TENNESSEE



BY: [Signature]
DATE: 10/15/10
PROJECT: [Project Name]
SCALE: 1/8" = 1'-0"
A2.10
15
FLOOR PLAN